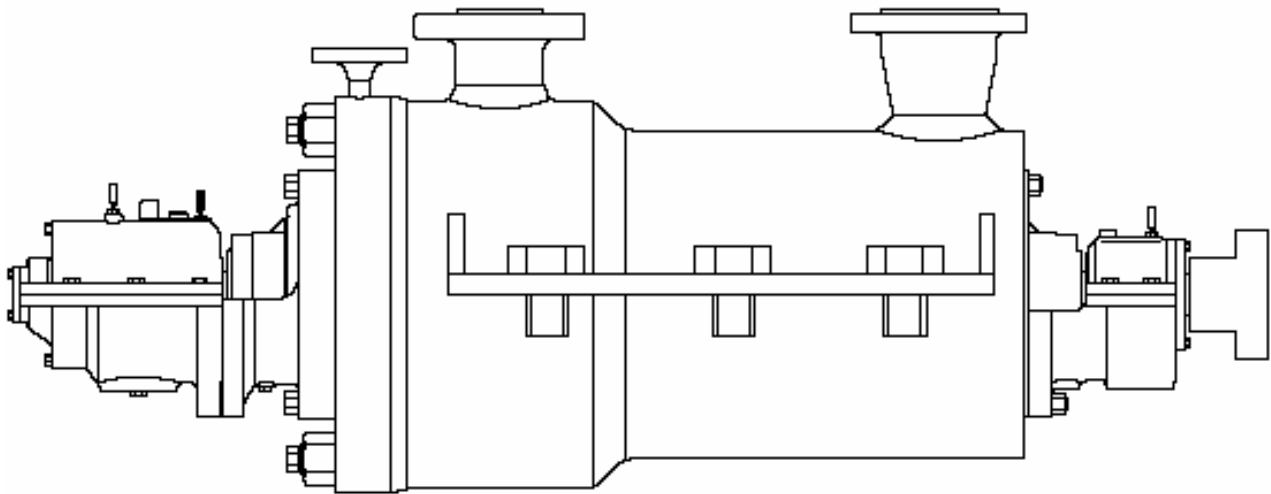




# APIFLO-MH Series

## Boiler Feed Pump

According to API 610



**Capacity:** up to 1200m<sup>3</sup>/h (50Hz.); up to 1440 m<sup>3</sup>/h (60Hz)

**Head:** up to 2800m (50Hz); up to 4032m (60Hz)

**Pressure:** up to 30 MPa

**Temperature:** -80~+210 °C

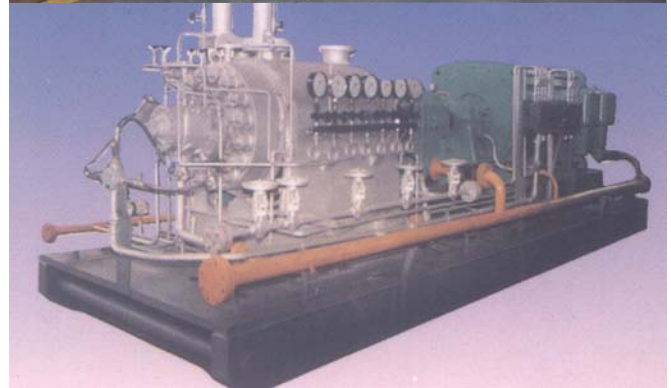
**Application:**

Mainly for handling medium, sub-high or high pressure boiler feed water, also for various clean mild liquids.



### 1 General

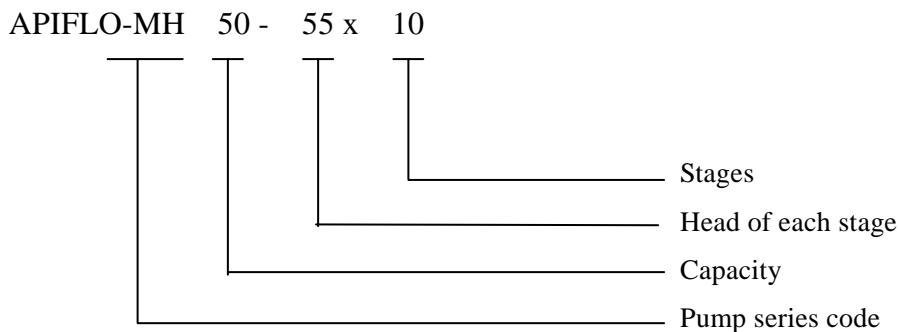
- ◇ APIFLO-MH series of pumps are horizontal multistage centrifugal pumps for handling boiler feed water or other various clean mild liquids. APIFLO-MH pumps are of single casing type.
- ◇ Mechanical seals with cartridge design.
- ◇ Seal flushing and cooling plan according to the standard of API 610 and API 682.
- ◇ Hydraulics design with wider high-efficiency region to ensure pumps running efficiently under various conditions.
- ◇ First stage impeller having high suction head increases the pump's anti-cavitations ability.
- ◇ Axial thrusts are absorbed by the balance device combined by balance disk and balance drum, it is reliable and safe.
- ◇ Axial thrusts are mainly absorbed by balance device. The residual thrusts are absorbed by self-lubricated rolling bearings or forced lubricated sliding bearings.
- ◇ Suction casing, discharge casing, outer casing and stage casing can be made of forging.
- ◇ Designed focusing on end-users' convenience maintenance.



### 2 Rotation direction

Clockwise viewed from the drive-end.

### 3 Designation





4 APIFLO-MH cross sectional drawing

